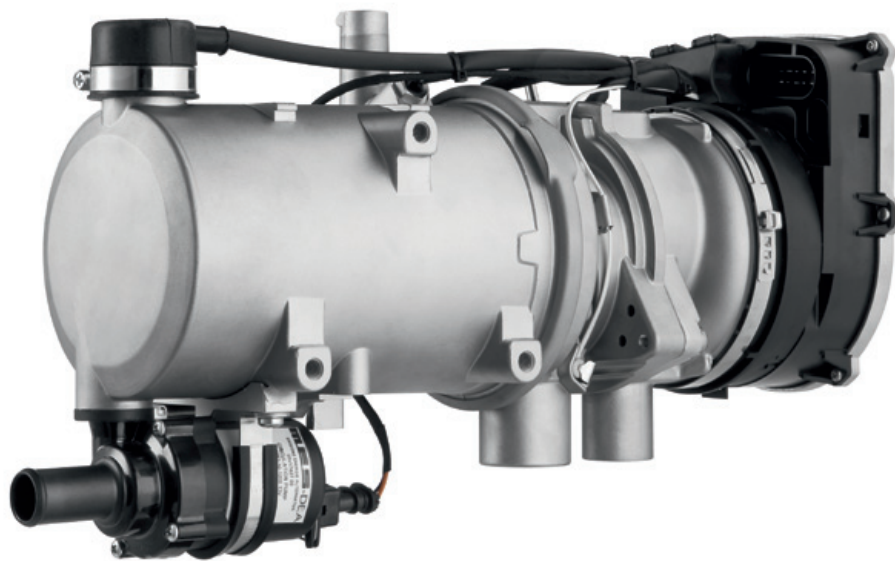


Thermo Pro 90

Reliable water heating system for demanding commercial vehicles



The Thermo Pro 90 has been specially designed for use in heavy commercial and specialty vehicles, as well as in minibuses.

New features such as altitude adjustment, Arctic Start and seamless heating control make these vehicles useful under even extreme conditions. Low energy consumption and operating noise make a valuable contribution to both cost-savings and environmental protection.

- **Engine-independent heating for heavy commercial vehicles, offering up to 9.1 kW of heating power**
- **Fast warm-up, even at the lowest temperatures, thanks to the Arctic Start function**
- **Low heater power consumption due to highly efficient design**
- **Highest product quality with long service life**
- **Automatic altitude adjustment up to 3,500 m (standard)**
- **Available for initial installation and retrofitting**



Truck



Light-duty Vehicles



Bus



Rail



Off-Highway



Defense



Special Vehicles

Technical specifications for heater

		Thermo Pro 90
		Diesel
ECE approval number	ECE R122 (heater)	E1 00 0320
	ECE R10 (EMC)	E1 03 6196
EG type approval number	(heater)	–
	(EMC)	–
Heating performance (kW)	Control range/boost	1.8 - 7.6/9.1
Fuel consumption (kg/h)	Control range/boost	0.15 - 0.90/1.1
Nominal voltage (V)		12/24
Nominal power consumption (W)	Part load - full load	20 - 83
	boost	90
Fuels	Suitability for special fuels	Diesel EN 590 up to 100 % PME 14214 Arctic-Diesel, heating oil (EL) F34, F58, F63
Operation temperature range (°C)		-40 to +80
Measurements L x W x H (mm)		355 x 131 x 232
Weight (kg)		4.9

Technical specifications for circulating pump

		U4846
Volume flow (l/h)		700
Measurements L x W x H (mm)		180 x 74 x 112 (incl. connectors)
Weight (kg)		0.7

Accessories, basic unit

- Heater, metering pump DP42, circulating pump, product documentation

Accessories, installation kit

- Wiring harness with safety switch, tank extracting device with fuel line, exhaust system with exhaust muffler, air intake muffler, water lines, heater support stand and extensive installation materials